





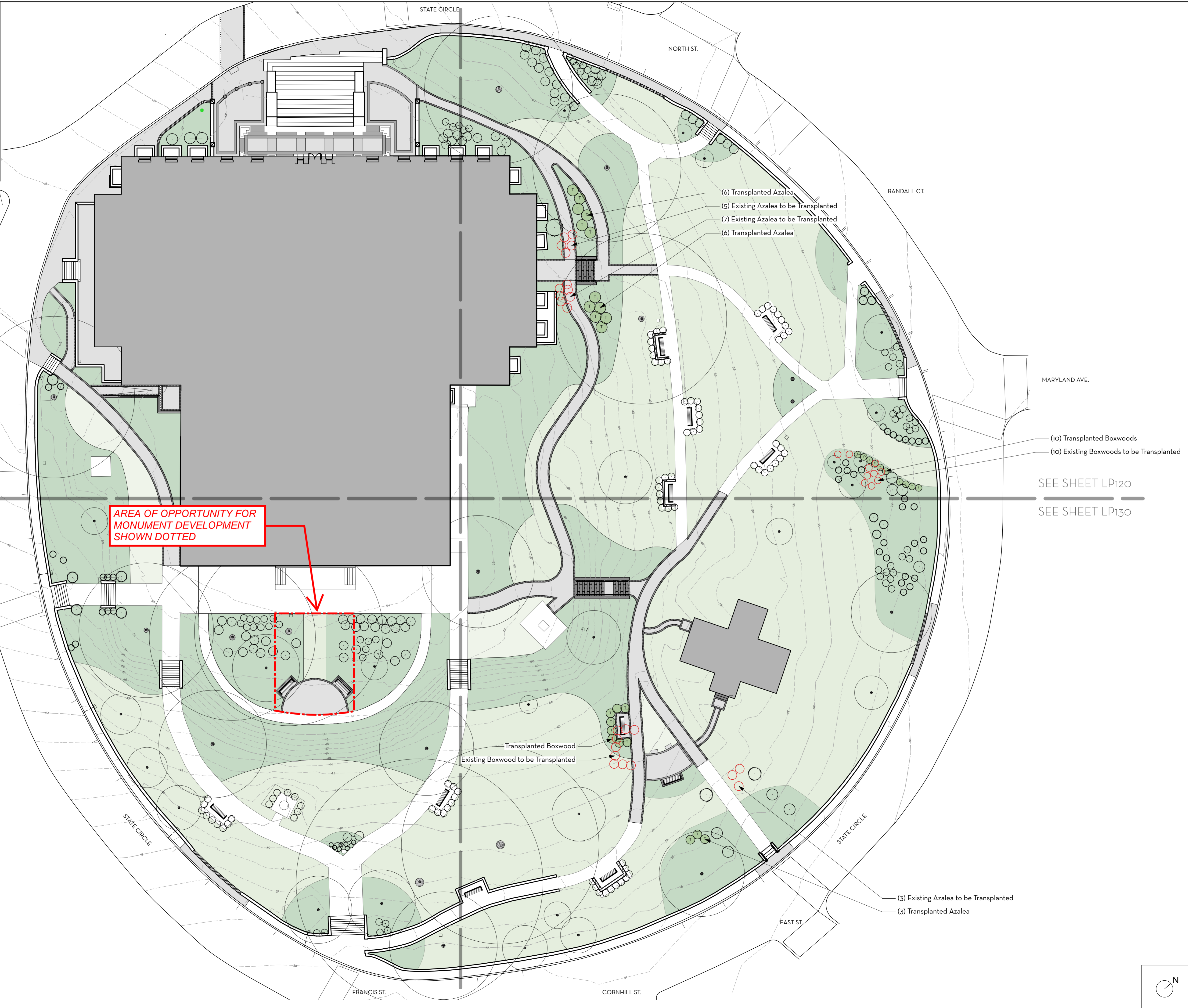


- LEGEND:**
-  EX. DECIDUOUS SHRUB
 -  EX. EVERGREEN SHRUB
 -  EX. SHRUB TO BE TRANSPLANTED
 -  TRANSPLANTED SHRUB
 -  PLANTING BEDS
 -  LAWN



SEE SHEET LP110
SEE SHEET LP140

**AREA OF OPPORTUNITY FOR
MONUMENT DEVELOPMENT
SHOWN DOTTED**

SEE SHEET LP120
SEE SHEET LP130

REVISIONS

NO.	DESCRIPTION

SCALE
1" = 20'-0"
COMMISSION NO.
2136
DRAWN BY
AL
DATE
01 DECEMBER 2023

NOTE: THE BASE PLAN IS DERIVED FROM A SURVEY GENERATED BY DRUM LOYKA & ASSOCIATES LLC ON MAY 01, 2023. FIELD MEASUREMENTS TAKEN BY CHLA AND GOOGLE EARTH AERIAL IMAGERY.

MATCHLINE - SEE SHEET LP110

MATCHLINE - SEE SHEET LP110

AREA OF OPPORTUNITY FOR MONUMENT DEVELOPMENT SHOWN DOTTED

ROOT SYSTEM MUST BE PROTECTED TO ENSURE SURVIVAL OF EXISTING TREE (typical of 2 trees)

- 2 - Existing Boxwood
- 12 - Hydrangea arborescens 'Annabelle'
- 2 - Existing Boxwood
- 6 - Existing Boxwood
- 2 - Existing Boxwood
- 19 - Rosa Sunny Knock Out
- 2 - Existing Boxwood
- 4 - Buxus 'Green Mountain'
- 8 - Buxus microphylla var. japonica 'Green Beauty'

- 9 - Cephalotaxus harringtonia 'Prostrata'
- 13 - Hydrangea arborescens 'Annabelle'
- 7 - Callicarpa 'Pearl Glam'
- 6 - Cephalotaxus harringtonia 'Prostrata'

- 12 - Rosa 'Radyod' Blushing Knockout
- 6 - Abelia 'Rose Creek'
- 2 - Existing Abelia

- 14 - Existing Azalea
- 3 - Existing Rhododendron
- 5 - Existing Pieris
- 2 - Existing Rhododendron
- 2 - Existing Azalea
- 10 - Buxus 'Green Mountain'

- 6 - Cephalotaxus harringtonia 'Prostrata'
- 7 - Callicarpa 'Pearl Glam'
- 6 - Hydrangea arborescens 'Annabelle'
- 5 - Buxus microphylla var. japonica 'Green Beauty'
- 9 - Buxus microphylla var. japonica 'Green Beauty'

- 5 - Rosa 'Radyod' Blushing Knockout
- 8 - Existing Boxwood
- 2 - Existing Abelia
- 6 - Abelia 'Rose Creek'

Planting Plan						
Campion Hruby Landscape Architects						
Key	Qty	Latin Name	Common Name	Size	Spacing (ft.)	Notes
SHRUBS						
ARC	12	Abelia 'Rose Creek'	Abelia	5 Gal.	4	
BGM	32	Buxus 'Green Mountain'	Boxwood	36" Ht.	5	
BMGB	68	Buxus microphylla var. japonica 'Green Beauty'	Boxwood	24" Ht.	3	
CPG	14	Callicarpa 'Pearl Glam'	Beautyberry	5 Gal.	5	
CH	29	Cephalotaxus harringtonia 'Prostrata'	Japanese Plum-Yew	5 Gal.	5	
HA	32	Hydrangea arborescens 'Annabelle'	Smooth Hydrangea	5 Gal.	4	
RR	17	Rosa 'Radyod' Blushing Knockout	Shrub Rose	5 Gal.	4	
RS	50	Rosa Sunny Knock Out	Knock Out Rose	5 Gal.	4	

NOTE: CONTRACTOR TO REPLACE ANY DIEBACK OR HOLES IN EXISTING BOXWOOD HEDGES AT ON-SITE BENCHES. CONTRACTOR TO VERIFY IN FIELD. MATCH EXISTING SHRUB VARIETY, FORM, AND SIZE.

NOTE: THE BASE PLAN IS DERIVED FROM A SURVEY GENERATED BY DRUM LOYKA & ASSOCIATES LLC ON MAY 01, 2023. FIELD MEASUREMENTS TAKEN BY CHLA AND GOOGLE EARTH AERIAL IMAGERY.

MCWB ARCHITECTS
388 BROADWAY, ALBANY, NY 12207
402 W DUKE OF GLOUCESTER STREET, WILLIAMSBURG, VA 23185
518.433.9394 | WWW.MCWB-ARCH.COM

CONSULTANTS

CHLA

CAMPION/HRUBY

111 CATHEDRAL STREET
SUITE 100
ANNAPOLIS, MD 21401
410.280.8850

PLANTING PLAN - SOUTHWEST QUADRANT:

TREES & SHRUBS

MARYLAND STATE HOUSE

RESTORATION OF EXTERIOR AND GROUNDS

PHASE II - GROUNDS REHABILITATION

100 State Circle, Annapolis, MD 21401

REVISIONS

SCALE

1"=10'-0"

COMMISSION NO.

2136

DRAWN BY

AL

DATE

01 DECEMBER 2023

LP140

DRAWING NO.